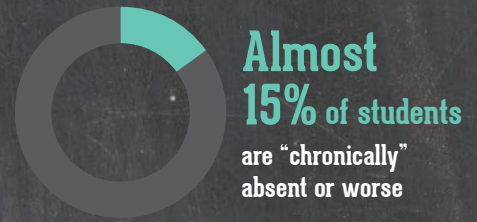
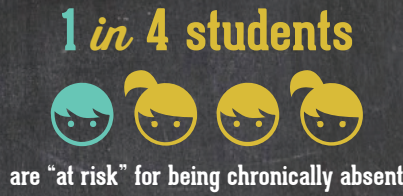
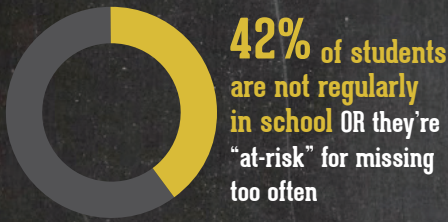
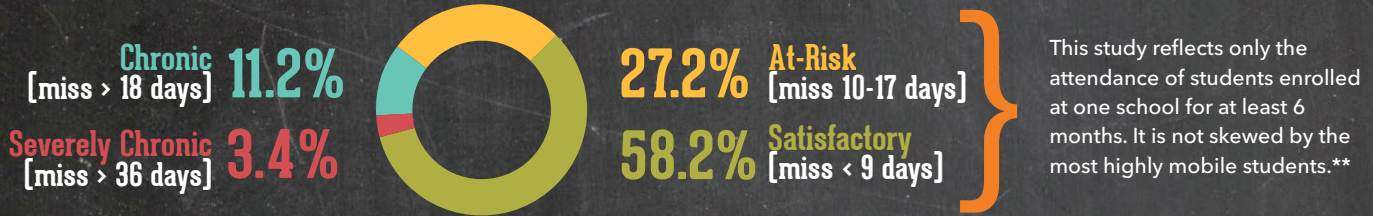


# Miss School Miss Out

Stop Absences Before They Start



## Absence rates for Montgomery County K-3 students\*



**1 in 5 kindergartners, and 1 in 10 3rd-graders,**  
are chronically absent or worse



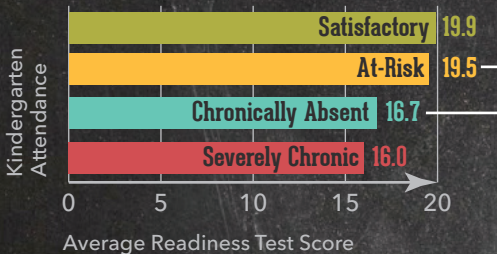
Missing just 2 days per month adds up to 18 days over the school year

**You don't have to guess who's at-risk**

Kindergarten readiness scores can predict which students are likely to miss too much school

You can identify at-risk students before their absences add up, giving you the chance to intervene early

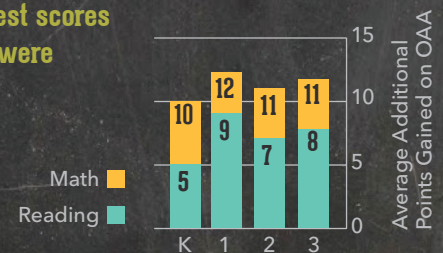
### Attendance, Readiness Scores Linked



Students who went on to miss more than 18 days in kindergarten, on average, scored 3 points lower on their readiness test\*\*\*

### High Attendance=High Test Scores

Students who had higher satisfactory attendance at each grade level in kindergarten through 3rd grade had higher average 3rd-grade reading and math test scores than students who were chronically absent



A good school-wide 'average' attendance rate can mask a high chronic absence rate

\* Analysis prepared by the University of Dayton Research Group and based on three years of attendance data from 7 high-poverty school districts (not including Dayton Public Schools) involving almost 18,000 Montgomery County students.

\*\* Attendance rate definitions established by Attendance Works.

\*\*\* Analysis prepared by the University of Dayton Research Group and based on students in six high-poverty Montgomery County school districts.